



Suits & Tuxedos

**FOR PURCHASE**

**JFW**

JIM'S FORMAL WEAR

**STORE COPY**  
2024

# Slim Fit Styles for **EVERY BODY**



Photo Courtesy of:  
Elizabeth Gelineau Photography  
elizabethgelineau.com



**Fashion-Forward & Comfortable  
for any shape or size**

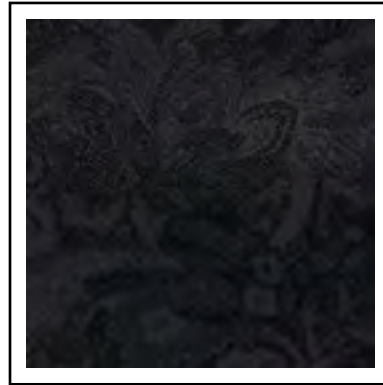
(up to size 66)



# FABRIC SWATCHES

## ITEMS FOR PURCHASE

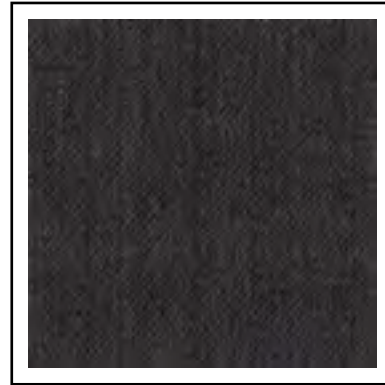
Reference page number for product details



**Color:** Black Paisley **Style:** N182  
**Page:** 29



**Color:** Granite Paisley **Style:** N192  
**Page:** 30



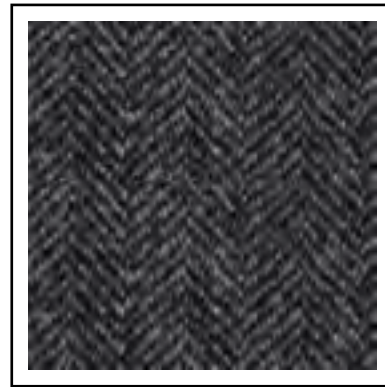
**Color:** Dark Grey **Style:** N8SC  
**Page:** 23



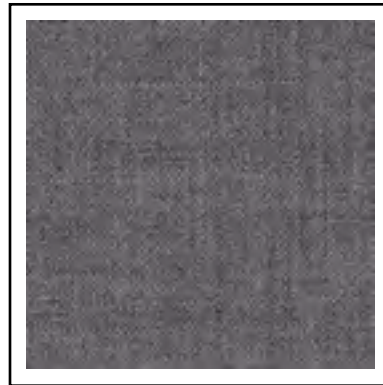
**Color:** Steel Grey **Style:** N392C  
**Page:** 10



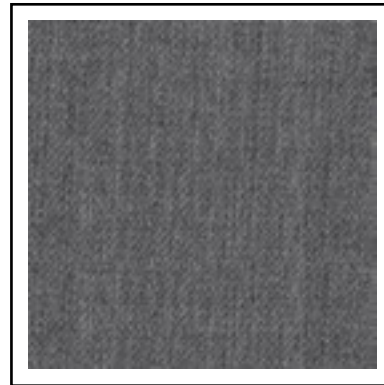
**Color:** Grey **Style:** N9GC  
**Page:** 18



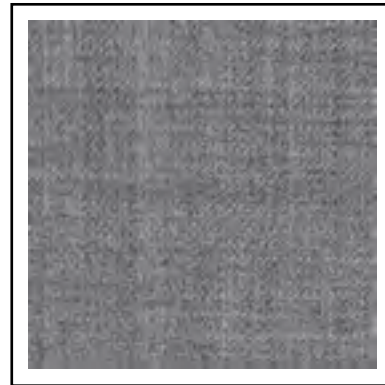
**Color:** Grey Tweed **Style:** NFTWG  
**Page:** 37



**Color:** Medium Grey **Style:** N350C  
**Page:** 9



**Color:** Light Grey **Style:** N8GC  
**Page:** 22



**Color:** Heather Grey **Style:** N262C  
**Page:** 11



**Color:** White/Silver Paisley **Style:** N172  
**Page:** 28



**Color:** Hunter Green **Style:** NHGC  
**Page:** 15



**Color:** Sage **Style:** NHSC  
**Page:** 14

# FABRIC SWATCHES

## ITEMS FOR PURCHASE

Reference page number for product details



**Color:** Navy **Style:** N372C  
**Page:** 6



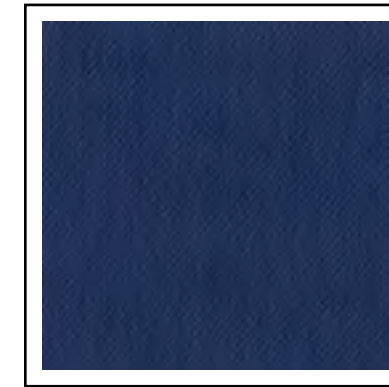
**Color:** Dark Indigo **Style:** N9IC  
**Page:** 19



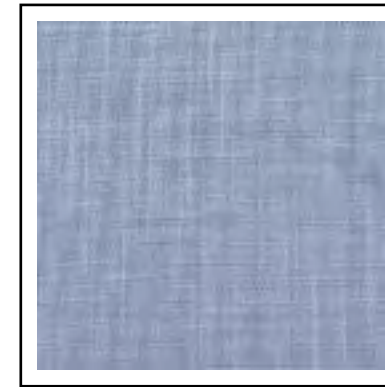
**Color:** Blue Tweed **Style:** NFTWB  
**Page:** 37



**Color:** Blue **Style:** N302C  
**Page:** 7



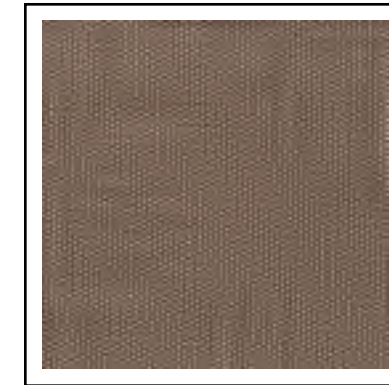
**Color:** Indigo **Style:** N8IC  
**Page:** 21



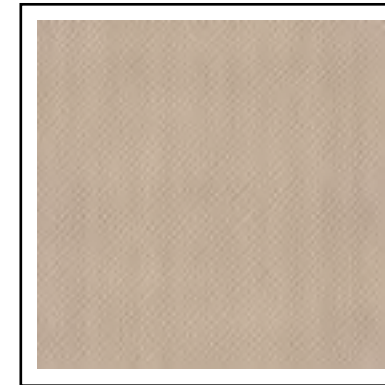
**Color:** Oxford Blue **Style:** NOBC  
**Page:** 16



**Color:** Brown Tweed **Style:** NFTW  
**Page:** 36



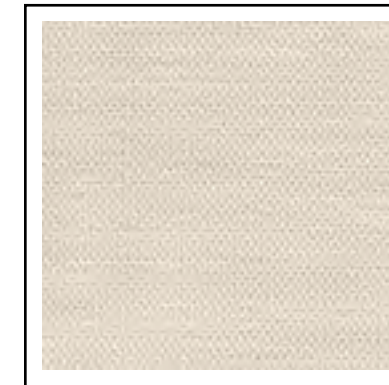
**Color:** Brown **Style:** N292C  
**Page:** 12



**Color:** Tan **Style:** N8TC  
**Page:** 24



**Color:** Tan **Style:** NHTC  
**Page:** 13



**Color:** Tan **Style:** N272C  
**Page:** 5



**Color:** Red **Style:** NRTC  
**Page:** 31





**RENT**  
OR  
**BUY**

To RENT see page 16 in  
the JFW Rental Catalog

**MICHAEL KORS**

**LEGACY  
PERFORMANCE  
STRETCH  
TUXEDO**



**SEPARATES  
COLLECTION**  
Mix and match your coat and pant  
sizes for the perfect fit.



**RENT**  
OR  
**BUY**

To RENT see page 18 in  
the JFW Rental Catalog

**MICHAEL KORS**

**TAN  
PERFORMANCE  
STRETCH  
WEDDING SUIT**



**SEPARATES  
COLLECTION**  
Mix and match your coat and pant  
sizes for the perfect fit.

**Legacy Performance  
Stretch Tuxedo Coat | N921C**  
Slim fit; 2-button; flap pockets; side-  
vented; mitered sleeves with buttons

**\$329**  
Coat Purchase Price

**Black Performance Stretch Pants | N921P**  
Slim fit; flat front; exact waist; belt loops;  
buttons to accommodate suspenders

**\$150**  
Pant Purchase Price

**Black Performance Stretch  
Fullback Vest | NF921**  
4-button; adjustable back;  
darted pockets

**\$79**  
Fullback Vest Purchase Price

**Fabric Content:** CoolMax® /  
Sorona® / Wool

**Coat Sizing:** Regular: 34-66  
Short: 34-56  
Long: 34-66  
X-Long: 38-56  
(even sizes only)

**Vest Sizing:**  
RXS - L5

**Tan Performance Stretch  
Suit Coat | N272C**  
Slim fit; 2-button; flap pockets; side-  
vented; mitered sleeves with buttons

**\$329**  
Coat Purchase Price

**Tan Performance Stretch  
Suit Pants | N272P**  
Slim fit; flat front; exact waist; belt loops;  
buttons to accommodate suspenders

**\$150**  
Pant Purchase Price

**Tan Performance Stretch  
Fullback Vest | NF272**  
4-button; adjustable back;  
darted pockets

**\$79**  
Fullback Vest Purchase Price

**Fabric Content:** CoolMax® /  
Sorona® / Wool

**Coat Sizing:** Regular: 34-66  
Short: 34-56  
Long: 34-66  
X-Long: 38-56  
(even sizes only)

**Vest Sizing:**  
RXS-L5

Also Shown: Solid Bow Tie | NBXBL - see page 38

Also Shown: Floral Windsor Tie | NWFRS - see page 41





To RENT see page 23 in the JFW Rental Catalog

## MICHAEL KORS

### SUPER 130'S NAVY STERLING WEDDING SUIT

**SEPARATES COLLECTION**  
Mix and match your coat and pant sizes for the perfect fit.



To RENT see page 20 in the JFW Rental Catalog

## MICHAEL KORS

### BLUE PERFORMANCE STRETCH WEDDING SUIT



**SEPARATES COLLECTION**  
Mix and match your coat and pant sizes for the perfect fit.



**Navy Sterling Suit Coat | N372C**  
Slim fit; 2-button; flap pockets; side-vented; mitered sleeves with buttons

**\$329**  
Coat Purchase Price

**Navy Sterling Suit Pants | N372P**  
Slim fit; flat front; exact waist; belt loops; buttons to accommodate suspenders

**\$150**  
Pant Purchase Price

**Navy Sterling Fullback Vest | NF372**  
4-button; adjustable back; darted pockets

**\$79**  
Fullback Vest Purchase Price

**Fabric Content:** Super 130's Wool

**Coat Sizing:** Regular: 34-66  
Short: 34-56  
Long: 34-66  
X-Long: 38-56 (even sizes only)

**Pant Sizing:** Regular: 28-66  
Short: 28-66  
Long: 28-66 (even sizes only)

**Vest Sizing:** RXS-L5

**Blue Performance Stretch Suit Coat | N302C**  
Slim fit; 2-button; flap pockets; side-vented; mitered sleeves with buttons

**\$329**  
Coat Purchase Price

**Blue Performance Stretch Suit Pants | N302P**  
Slim fit; flat front; exact waist; belt loops; buttons to accommodate suspenders

**\$150**  
Pant Purchase Price

**Blue Performance Stretch Fullback Vest | NF302**  
4-button; adjustable back; darted pockets

**\$79**  
Fullback Vest Purchase Price

**Fabric Content:** CoolMax® / Sorona® / Wool

**Coat Sizing:** Regular: 34-66  
Short: 34-56  
Long: 34-66  
X-Long: 38-56 (even sizes only)

**Pant Sizing:** Regular: 28-66  
Short: 28-66  
Long: 28-66 (even sizes only)

**Vest Sizing:** RXS-L5

Also Shown: Floral Windsor Tie | NWFSE - see page 41

Also Shown: Floral Windsor Tie | NWFPT - see page 41





To RENT see page 17 in the JFW Rental Catalog

## MICHAEL KORS

**BLACK PERFORMANCE STRETCH WEDDING SUIT**



**SEPARATES COLLECTION**  
Mix and match your coat and pant sizes for the perfect fit.



To RENT see page 19 in the JFW Rental Catalog

## MICHAEL KORS

**MEDIUM GREY PERFORMANCE STRETCH WEDDING SUIT**



**SEPARATES COLLECTION**  
Mix and match your coat and pant sizes for the perfect fit.



**Black Performance Stretch Suit Coat | N421C**  
Slim fit; 2-button; flap pockets; side-vented; mitered sleeves with buttons

**\$329**  
Coat Purchase Price

**Black Performance Stretch Pants | N921P**  
Slim fit; flat front; exact waist; belt loops; buttons to accommodate suspenders

**\$150**  
Pant Purchase Price

**Black Performance Stretch Fullback Vest | NF921**  
4-button; adjustable back; darted pockets

**\$79**  
Fullback Vest Purchase Price

Fabric Content: CoolMax® / Sorona® / Wool

**Coat Sizing:** Regular: 34-66  
Short: 34-56  
Long: 34-66  
X-Long: 38-56 (even sizes only)

**Pant Sizing:** Regular: 28-66  
Short: 28-66  
Long: 28-66 (even sizes only)

**Vest Sizing:** RXS-L5

**Medium Grey Performance Stretch Suit Coat | N350C**  
Slim fit; 2-button; flap pockets; side-vented; mitered sleeves with buttons

**\$329**  
Coat Purchase Price

**Medium Grey Performance Stretch Suit Pants | N350P**  
Slim fit; flat front; exact waist; belt loops; buttons to accommodate suspenders

**\$150**  
Pant Purchase Price

**Medium Grey Performance Stretch Fullback Vest | NF350**  
4-button; adjustable back; darted pockets

**\$79**  
Fullback Vest Purchase Price

Fabric Content: CoolMax® / Sorona® / Wool

**Coat Sizing:** Regular: 34-66  
Short: 34-56  
Long: 34-66  
X-Long: 38-56 (even sizes only)

**Pant Sizing:** Regular: 28-66  
Short: 28-66  
Long: 28-66 (even sizes only)

**Vest Sizing:** RXS-L5

Also Shown: Striped Windsor Tie | NWXSE - see page 42

Also Shown: Solid Windsor Tie | NWWFB - see page 39





To RENT see page 25 in the JFW Rental Catalog

## MICHAEL KORS

**SUPER 130'S  
STEEL GREY  
STERLING  
WEDDING SUIT**

**SEPARATES  
COLLECTION**  
Mix and match your coat and pant sizes for the perfect fit.



To RENT see page 31 in the JFW Rental Catalog

## ALLURE MEN®

**SUPER 130'S  
HEATHER GREY  
CLAYTON SUIT**

**SEPARATES  
COLLECTION**  
Mix and match your coat and pant sizes for the perfect fit.

**Steel Grey Sterling Suit Coat | N392C**  
Slim fit; 2-button; flap pockets; side-vented; mitered sleeves with buttons

**\$329**  
Coat Purchase Price

**Steel Grey Sterling Suit Pants | N392P**  
Slim fit; flat front; exact waist; belt loops; buttons to accommodate suspenders

**\$150**  
Pant Purchase Price

**Steel Grey Sterling Fullback Vest | NF392**  
4-button; adjustable back; darted pockets

**\$79**  
Fullback Vest Purchase Price

**Fabric Content:** Super 130's Wool

**Coat Sizing:** Regular: 34-66  
Short: 34-56  
Long: 34-66  
X-Long: 38-56 (even sizes only)

**Pant Sizing:** Regular: 28-66  
Short: 28-66  
Long: 28-66 (even sizes only)

**Vest Sizing:** RXS-L5

Also Shown: Solid Bow Tie | NBXBL - see page 38

**Heather Grey Clayton Suit Coat | N262C**  
Slim fit; 2-button; flap pockets; side-vented; mitered sleeves with buttons

**\$329**  
Coat Purchase Price

**Heather Grey Clayton Suit Pants | N262P**  
Slim fit; flat front; exact waist; belt loops; buttons to accommodate suspenders

**\$150**  
Pant Purchase Price

**Heather Grey Clayton Fullback Vest | NF262**  
5-button; adjustable back; darted pockets

**\$79**  
Fullback Vest Purchase Price

**Fabric Content:** Super 130's Wool

**Coat Sizing:** Regular: 34-66  
Short: 34-56  
Long: 34-66  
X-Long: 38-56 (even sizes only)

**Pant Sizing:** Regular: 28-66  
Short: 28-66  
Long: 28-66 (even sizes only)

**Vest Sizing:** RXS-L5

Also Shown: Solid Bow Tie | NBXNA - see page 38



**BROWN ARCHER  
SLIM FIT SUIT**

**Brown Archer Suit Coat | N292C**  
Slim fit; 2-button notch; flap pockets;  
side-vented; telescopic sleeves

**\$259**  
Coat Purchase Price

**Brown Archer Suit Pants | N292P**

Slim fit; flat front; exact elastic  
waist; belt loops

**\$115**  
Pant Purchase Price

**Brown Archer Fullback Vest | NF292**

4-button; adjustable back; darted pockets

**\$79**  
Fullback Vest Purchase Price

**Fabric Content:** Poly/Wool Stretch

**Coat Sizing:** Regular: 34-66  
Short: 34-56  
Long: 34-66  
X-Long: 38-56  
(even sizes only)

**Pant Sizing:** Regular: 28-66  
Short: 28-66  
Long: 28-66  
(even sizes only)

**Vest Sizing:**  
RXS-R4; LM-L2

**Also Shown:**  
**Striped Windsor Tie | NWXRW**  
see page 42

**Cognac Brown Oxford Shoes | NCXS**  
see page 45

**SEPARATES  
COLLECTION**  
Mix and match your coat and pant  
sizes for the perfect fit.



**TAN STRETCH  
SLIM FIT SUIT**

**Tan Suit Coat | NHTC**  
Slim fit; 2-button notch; flap pockets;  
side-vented; telescopic sleeves

**\$199**  
Coat Purchase Price

**Tan Suit Pants | NHTP**

Slim fit; flat front; exact elastic  
waist; belt loops

**\$85**  
Pant Purchase Price

**Tan Fullback Vest | NFHT**

4-button; adjustable back; darted  
pockets

**\$59**  
Fullback Vest Purchase Price

**Fabric Content:** Poly/Viscose Stretch

**Coat Sizing:** Regular: 34-60  
Short: 34-50  
Long: 36-60  
(even sizes only)

**Pant Sizing:** Regular: 28-60  
Short: 34-52  
Long: 28-60  
(even sizes only)

**Vest Sizing:**  
RXS-R4; LM-L2

**Also Shown:**  
**Striped Windsor Tie | NWXCI**  
see page 42

**Cognac Brown Oxford Shoes | NCXS**  
see page 45

**SEPARATES  
COLLECTION**  
Mix and match your coat and pant  
sizes for the perfect fit.



**SAGE STRETCH  
SLIM FIT SUIT**

**Sage Suit Coat | NHSC**

Slim fit; 2-button notch; flap pockets; side-vented; telescopic sleeves

**\$199**

Coat Purchase Price

**Sage Suit Pants | NHSP**

Slim fit; flat front; exact elastic waist; belt loops

**\$85**

Pant Purchase Price

**Sage Fullback Vest | NFHS**

4-button; adjustable back; darted pockets

**\$59**

Fullback Vest Purchase Price

**Fabric Content:** Poly/Viscose Stretch

**Coat Sizing:** Regular: 34-60  
Short: 34-50  
Long: 36-60  
(even sizes only)

**Pant Sizing:** Regular: 28-60  
Short: 34-52  
Long: 28-60  
(even sizes only)

**Vest Sizing:**  
RXS-R4; LM-L2

**Also Shown:**  
**Striped Windsor Tie | NWXGO**  
see page 42

**White Synchro Casual Shoes | NCSW**  
see page 44

**SEPARATES  
COLLECTION**

Mix and match your coat and pant sizes for the perfect fit.



**HUNTER GREEN  
STRETCH SLIM FIT  
SUIT**

**Hunter Green Suit Coat | NHGC**

Slim fit; 2-button notch; flap pockets; side-vented; telescopic sleeves

**\$199**

Coat Purchase Price

**Hunter Green Suit Pants | NHGP**

Slim fit; flat front; exact elastic waist; belt loops

**\$85**

Pant Purchase Price

**Hunter Green Fullback Vest | NFHG**

4-button; adjustable back; darted pockets

**\$59**

Fullback Vest Purchase Price

**Fabric Content:** Poly/Viscose Stretch

**Coat Sizing:** Regular: 34-60  
Short: 34-50  
Long: 36-60  
(even sizes only)

**Pant Sizing:** Regular: 28-60  
Short: 34-52  
Long: 28-60  
(even sizes only)

**Vest Sizing:**  
RXS-R4; LM-L2

**Also Shown:**  
**Striped Windsor Tie | NWXBL**  
see page 42  
**Black Oxford Shoes | NBXS**  
see page 45

**SEPARATES  
COLLECTION**

Mix and match your coat and pant sizes for the perfect fit.





**OXFORD BLUE  
STRETCH  
SLIM FIT SUIT**

**Oxford Blue Suit Coat | NOBC**

Slim fit; 2-button notch; flap pockets; side-vented; telescopic sleeves

**\$199**

Coat Purchase Price

**Oxford Blue Suit Pants | NOBP**

Slim fit; flat front; exact elastic waist; belt loops

**\$85**

Pant Purchase Price

**Oxford Blue Fullback Vest | NFOB**

4-button; adjustable back; darted pockets

**\$59**

Fullback Vest Purchase Price

**Fabric Content:** Poly/Viscose Stretch

**Coat Sizing:** Regular: 34-60  
Short: 34-50  
Long: 36-60  
(even sizes only)

**Pant Sizing:** Regular: 28-60  
Short: 34-52  
Long: 28-60  
(even sizes only)

**Vest Sizing:**  
RXS-R4; LM-L2

**Also Shown:**  
**Floral Windsor Tie | NWFL**  
see page 41  
**Cognac Maddox Suit Shoes | NMCS**  
see page 45

**SEPARATES  
COLLECTION**

Mix and match your coat and pant sizes for the perfect fit.



**BLACK STRETCH  
SLIM FIT SUIT**

**Black Suit Coat | NSBC**

Slim fit; 2-button notch; flap pockets; side-vented; mitered sleeves

**\$199**

Coat Purchase Price

**Black Stretch Pants | NSBP**

Slim fit; flat front; exact elastic waist; belt loops

**\$85**

Pant Purchase Price

**Black Fullback Vest | NFSB (not shown)**

4-button; adjustable back; darted pockets

**\$59**

Fullback Vest Purchase Price

**Fabric Content:** Poly/Viscose Stretch

**Coat Sizing:** Regular: 34-60  
Short: 34-50  
Long: 36-60  
X-Large: 38-52  
(even sizes only)

**Pant Sizing:** Regular: 28-60  
Short: 28-60  
Long: 28-60  
(even sizes only)

**Vest Sizing:**  
RXS-R4; LM-L2

**Also Shown:**  
**Solid Windsor Tie | NWWCA**  
see page 39

**SEPARATES  
COLLECTION**

Mix and match your coat and pant sizes for the perfect fit.



**SUPER 120'S  
GREY SLIM FIT SUIT**

**Super 120's Grey Suit Coat | N9GC**

Slim fit; 2-button notch; flap pockets; side-vented

**\$219**

Coat Purchase Price

**Super 120's Grey Suit Pants | N9GP**

Slim fit; flat front; exact waist; belt loops; buttons to accommodate suspenders

**\$90**

Pant Purchase Price

**Super 120's Grey Fullback Vest | NF9G**

4-button; adjustable back; darted pockets

**\$69**

Fullback Vest Purchase Price

**Fabric Content:** Super 120's Wool

**Coat Sizing:** Regular: 34-66  
Short: 34-56  
Long: 34-66  
X-Long: 38-56 (even sizes only)

**Pant Sizing:** Regular: 28-66  
Short: 28-66  
Long: 28-66 (even sizes only)

**Vest Sizing:**  
RXS - 5XA

**Also Shown:**  
**Floral Bow Tie | NBFDB**  
see page 40  
**Cognac Brown Oxford Shoes | NCXS**  
see page 45

**SEPARATES  
COLLECTION**

Mix and match your coat and pant sizes for the perfect fit.



**SUPER 120'S  
DARK INDIGO  
SLIM FIT SUIT**

**Super 120's Dark Indigo Suit Coat | N9IC**

Slim fit; 2-button notch; flap pockets; side-vented

**\$219**

Coat Purchase Price

**Super 120's Dark Indigo Suit Pants | N9IP**

Slim fit; flat front; exact waist; belt loops; buttons to accommodate suspenders

**\$90**

Pant Purchase Price

**Super 120's Dark Indigo Fullback Vest | NF9I**

4-button; adjustable back; darted pockets

**\$69**

Fullback Vest Purchase Price

**Fabric Content:** Super 120's Wool

**Coat Sizing:** Regular: 34-66  
Short: 34-56  
Long: 34-66  
X-Long: 38-56 (even sizes only)

**Pant Sizing:** Regular: 28-66  
Short: 28-66  
Long: 28-66 (even sizes only)

**Vest Sizing:**  
RXS - 5XA

**Also Shown:**  
**Floral Windsor Tie | NWFSL**  
see page 41

**SEPARATES  
COLLECTION**

Mix and match your coat and pant sizes for the perfect fit.





**SUPER 120'S  
BLACK SLIM FIT SUIT**

**Super 120's Black Suit Coat | N9BC**

Slim fit; 2-button notch; flap pockets; side-vented

**\$219**

Coat Purchase Price

**Super 120's Black Suit Pants | N9BP**

Slim fit; flat front; exact waist; belt loops; buttons to accommodate suspenders

**\$90**

Pant Purchase Price

**Super 120's Black Fullback Vest | NF9B**

4-button; adjustable back; darted pockets

**\$69**

Fullback Vest Purchase Price

**Fabric Content:** Super 120's Wool

**Coat Sizing:** Regular: 34-66  
Short: 34-56  
Long: 34-66  
X-Long: 38-56 (even sizes only)

**Pant Sizing:** Regular: 28-66  
Short: 28-66  
Long: 28-66  
(even sizes only)

**Vest Sizing:**  
RXS - 5XA

**Also Shown:**  
**Solid Windsor Tie | NWWBL**  
see page 39

**SEPARATES  
COLLECTION**

Mix and match your coat and pant sizes for the perfect fit.



**INDIGO  
SLIM FIT SUIT**

**Indigo Suit Coat | N81C**

Slim fit; 2-button notch; flap pockets; side-vented

**\$199**

Coat Purchase Price

**Indigo Suit Pants | N81P**

Slim fit; flat front; exact waist; belt loops; buttons to accommodate suspenders

**\$85**

Pant Purchase Price

**Indigo Fullback Vest | NF81**

4-button; adjustable back; darted pockets

**\$59**

Fullback Vest Purchase Price

**Fabric Content:** Premium Wool Blend

**Coat Sizing:** Regular: 34-66  
Short: 34-56  
Long: 34-66  
X-Long: 38-56 (even sizes only)

**Pant Sizing:** Regular: 28-66  
Short: 28-66  
Long: 28-66  
(even sizes only)

**Vest Sizing:**  
RXS - 5XA

**Also Shown:**  
**Floral Bow Tie | NFBFH**  
see page 40  
**Cognac Brown Oxford Shoes | NCXS**  
see page 45

**SEPARATES  
COLLECTION**

Mix and match your coat and pant sizes for the perfect fit.





**LIGHT GREY SLIM FIT SUIT**

**Light Grey Suit Coat | N8GC**  
Slim fit; 2-button notch; flap pockets; side-vented

**\$199**  
Coat Purchase Price

**Light Grey Suit Pants | N8GP**  
Slim fit; flat front; exact waist; belt loops; buttons to accommodate suspenders

**\$85**  
Pant Purchase Price

**Light Grey Fullback Vest | NF8G**  
4-button; adjustable back; darted pockets

**\$59**  
Fullback Vest Purchase Price

**Fabric Content:** Premium Wool Blend

**Coat Sizing:** Regular: 34-66  
Short: 34-56  
Long: 34-66  
X-Long: 38-56 (even sizes only)

**Pant Sizing:** Regular: 28-66  
Short: 28-66  
Long: 28-66  
(even sizes only)

**Vest Sizing:**  
RXS - 5XA

**Also Shown:**  
**Solid Windsor Tie | NWWSI**  
see page 39

**SEPARATES COLLECTION**  
Mix and match your coat and pant sizes for the perfect fit.



**DARK GREY SLIM FIT SUIT**

**Dark Grey Suit Coat | N8SC**  
Slim fit; 2-button notch; flap pockets; side-vented

**\$199**  
Coat Purchase Price

**Dark Grey Suit Pants | N8SP**  
Slim fit; flat front; exact waist; belt loops; buttons to accommodate suspenders

**\$85**  
Pant Purchase Price

**Dark Grey Fullback Vest | NF8S**  
4-button; adjustable back; darted pockets

**\$59**  
Fullback Vest Purchase Price

**Fabric Content:** Premium Wool Blend

**Coat Sizing:** Regular: 34-66  
Short: 34-56  
Long: 34-66  
X-Long: 38-56 (even sizes only)

**Pant Sizing:** Regular: 28-66  
Short: 28-66  
Long: 28-66  
(even sizes only)

**Vest Sizing:**  
RXS - 5XA

**Also Shown:**  
**Floral Windsor Tie | NWFNA**  
see page 41

**SEPARATES COLLECTION**  
Mix and match your coat and pant sizes for the perfect fit.



**TAN  
SLIM FIT SUIT**

**Tan Suit Coat | N8TC**

Slim fit; 2-button notch; flap pockets; side-vented

**\$199**

Coat Purchase Price

**Tan Suit Pants | N8TP**

Slim fit; flat front; exact waist; belt loops; buttons to accommodate suspenders

**\$85**

Pant Purchase Price

**Tan Fullback Vest | NF8T**

4-button; adjustable back; darted pockets

**\$59**

Fullback Vest Purchase Price

**Fabric Content:** Premium Wool Blend

**Coat Sizing:** Regular: 34-66  
Short: 34-56  
Long: 34-66  
X-Long: 38-56 (even sizes only)

**Pant Sizing:** Regular: 28-66  
Short: 28-66  
Long: 28-66  
(even sizes only)

**Vest Sizing:**  
RXS - 5XA

**Also Shown:**  
**Floral Windsor Tie | NWFPC**  
see page 41

**SEPARATES  
COLLECTION**

Mix and match your coat and pant sizes for the perfect fit.



**SUPER 120'S  
BLACK 2-BUTTON  
SLIM FIT TUXEDO**

**Super 120's Tuxedo Coat | N19C**

Slim fit; 2-button; notch lapel; side-vented

**\$279**

Coat Purchase Price

**Super 120's Tuxedo Pants | N19P**

Slim fit; flat front; exact waist; buttons to accommodate suspenders; satin leg piping

**\$90**

Pant Purchase Price

**Fabric Content:** Super 120's Wool

**Coat Sizing:** Regular: 34-66  
Short: 34-56  
Long: 34-66  
X-Long: 38-56 (even sizes only)

**Pant Sizing:** Regular: 28-66  
Short: 28-66  
Long: 28-66  
(even sizes only)

**Also Shown:**  
**Black Satin Bow Tie | RBBT**  
see page 46  
**Black Fullback Vest | NFBS**  
see page 36  
**Black Allegro Shoes | NBAS**  
see page 45

**SEPARATES  
COLLECTION**

Mix and match your coat and pant sizes for the perfect fit.



**BLACK STRETCH  
SLIM FIT TUXEDO**

**Black Tuxedo Coat | NTBC**  
Slim fit; 2-button notch; satin double-besom pockets; side-vented; telescopic sleeves

**\$219**  
Coat Purchase Price

**Black Stretch Pants | NSBP**  
Slim fit; flat front; exact elastic waist; belt loops

**\$85**  
Pant Purchase Price

**Black Fullback Vest | NFSB**  
4-button; adjustable back; darted pockets

**\$59**  
Fullback Vest Purchase Price

**Fabric Content:** Poly/Viscose Stretch

**Coat Sizing:** Regular: 34-60  
Short: 34-50  
Long: 36-60  
X-Long: 38-52  
(even sizes only)

**Pant Sizing:** Regular: 28-60  
Short: 28-60  
Long: 28-60  
(even sizes only)

**Vest Sizing:**  
RXS-R4; LM-L2

**Also Shown:**  
**Solid Bow Tie | NBXWI**  
see page 38  
**Black Allegro Shoes | NBAS**  
see page 45

**SEPARATES  
COLLECTION**  
Mix and match your coat and pant sizes for the perfect fit.



**WHITE CLASSIC DINNER JACKET**



**RENT  
OR  
BUY**

To RENT see page 51 in the JFW Rental Catalog

**White Classic Dinner Jacket | N70**  
Slim fit; 1-button; shawl lapel; center-vented; flap pockets

**\$199**  
Coat Purchase Price

**Super 120's Tuxedo Pants | N19P**  
Slim fit; flat front; exact waist; buttons to accommodate suspenders; satin leg piping

**\$90**  
Pant Purchase Price

**Fabric Content:** Polyester

**Coat Sizing:** Regular: 34-60  
Short: 34-52  
Long: 36-60  
(even sizes only)

**Pant Sizing:** Regular: 28-66  
Short: 28-66  
Long: 28-66  
(even sizes only)

**IVORY CLASSIC DINNER JACKET**



**RENT  
OR  
BUY**

To RENT see page 49 in the JFW Rental Catalog

**Ivory Classic Dinner Jacket | N601C**  
Slim fit; 1-button; shawl lapel; side-vented; double besom pockets

**\$199**  
Coat Purchase Price

**Super 120's Tuxedo Pants | N19P**  
Slim fit; flat front; exact waist; buttons to accommodate suspenders; satin leg piping

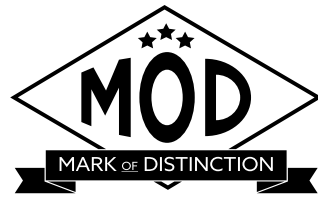
**\$90**  
Pant Purchase Price

**Fabric Content:** Polyester

**Coat Sizing:** Regular: 34-60  
Short: 34-60  
Long: 34-60  
X-Long: 38-50  
(even sizes only)

**Pant Sizing:** Regular: 28-66  
Short: 28-66  
Long: 28-66  
(even sizes only)





**WHITE/SILVER  
ARIES PAISLEY  
SLIM FIT TUXEDO**

**White/Silver Aries Paisley  
Tuxedo Coat | N172**  
Slim fit; 1-button w/white shawl lapel;  
double-besom pockets; side-vented

**\$199**

Coat Purchase Price

**Euro Slim Stretch Suit Pants | N17P**

Euro Slim Fit; flat front; exact waist;  
belt loops

**\$85**

Pant Purchase Price

**Coat Fabric Content:** 100% Polyester  
**Pant Fabric Content:** Poly/Knit Blend

<b>Coat Sizing:</b>	<b>Pant Sizing:</b>
Regular: 34-66	Regular: 28-44
Short: 34-56	Short: 28-44
Long: 36-66	Long: 28-44
X-Long: 38-56	Boys': 26-28
(even sizes only)	(even sizes only)

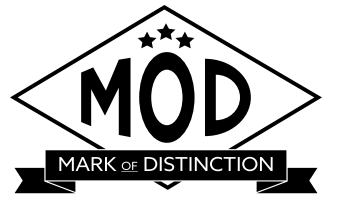
**Also Shown:**  
**Floral Windsor Tie | NWFPT**  
see page 41  
**White Synchro Casual Shoes | NCSW**  
see page 44



To RENT see page 35 in  
the JFW Rental Catalog



To RENT see page 37 in  
the JFW Rental Catalog



**BLACK  
ARIES PAISLEY  
SLIM FIT TUXEDO**

**Black Aries Paisley Tuxedo Coat | N182**  
Slim fit; 1-button w/black shawl lapel;  
double-besom pockets; side-vented

**\$199**

Coat Purchase Price

**Euro Slim Stretch Suit Pants | N11P**

Euro Slim Fit; flat front; exact waist;  
belt loops

**\$85**

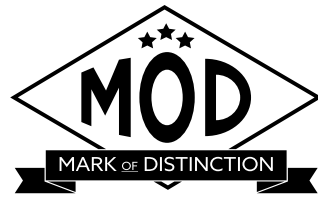
Pant Purchase Price

**Coat Fabric Content:** 100% Polyester  
**Pant Fabric Content:** Poly/Knit Blend

<b>Coat Sizing:</b>	<b>Pant Sizing:</b>
Regular: 34-66	Regular: 28-44
Short: 34-56	Short: 28-44
Long: 36-66	Long: 28-44
X-Long: 38-56	Boys': 26-28
Boys': 14-18	(even sizes only)
(even sizes only)	

**Also Shown:**  
**Satin Pre-Tied Bow Tie | RBBT**  
see page 46  
**Black Sparkle Shoes | NBSKS**  
see page 44





### GRANITE ARIES PAISLEY SLIM FIT TUXEDO

**Granite Aries Paisley Tuxedo Coat | N192**  
Slim fit; 1-button w/black shawl lapel;  
double-besom pockets; side-vented

**\$199**

Coat Purchase Price

**Euro Slim Stretch Suit Pants | N11P**  
Euro Slim Fit; flat front; exact waist;  
belt loops

**\$85**

Pant Purchase Price

**Coat Fabric Content:** 100% Polyester  
**Pant Fabric Content:** Poly/Knit Blend

<b>Coat Sizing:</b>	<b>Pant Sizing:</b>
Regular: 34-66	Regular: 28-44
Short: 34-56	Short: 28-44
Long: 36-66	Long: 28-44
X-Long: 38-56	Boys': 26-28
Boys': 14-18	(even sizes only)
(even sizes only)	

**Also Shown:**  
**Satin Pre-Tied Bow Tie | RBBT**  
see page 46  
**Charcoal Subtle Sparkle Shoes | NCSSS**  
see page 44



To RENT see page 36 in  
the JFW Rental Catalog



## COUTURE — 1 9 1 0 —

### RED STRETCH SLIM FIT TUXEDO

**Red Tuxedo Coat | NRTC**  
Slim fit; 1-button w/black peak lapel;  
double-besom pockets; side-vented;  
telescopic sleeves

**\$199**

Coat Purchase Price

**Euro Slim Stretch Suit Pants | N11P**  
Euro Slim Fit; flat front; exact waist;  
belt loops

**\$85**

Pant Purchase Price

**Coat Fabric Content:** Poly/Viscose Stretch  
**Pant Fabric Content:** Poly/Knit Blend

<b>Coat Sizing:</b>	<b>Pant Sizing:</b>
Regular: 34-60	Regular: 28-44
Short: 34-50	Short: 28-44
Long: 36-60	Long: 28-44
(even sizes only)	Boys': 26-28
	(even sizes only)

**Also Shown:**  
**Solid Windsor Tie | NWWBL**  
see page 39  
**Red Suede Loafers | NRSL**  
see page 44



## TODDLER TUX



**Toddler Tux | TXB**  
includes coat, pant, shirt, fullback vest and tie

**Fabric Content:** Polyester

**Toddler Tux Sizing:**

Size:	Fits:	Chest:	Waist:	Outseam:
01	12-18 mos.	19"	18-21"	18"
02	2T	21"	19-22"	19.5"
03	3T	23"	20-23"	21.5"

**\$89**

Toddler Tux for Purchase

## TODDLER SUITS



**Navy Toddler Nested Suit | NSTN**

2-button notch, elastic back pants, adjustable vest; white plain front shirt; windsor tie; 100% polyester



**Black Toddler Nested Suit | NSTB**

2-button notch, elastic back pants, adjustable vest; white plain front shirt; windsor tie; 100% polyester



**Grey Toddler Nested Suit | NSTG**

2-button notch, elastic back pants, adjustable vest; white plain front shirt; windsor tie; 100% polyester



**Tan Toddler Nested Suit | NSTT**

2-button notch, elastic back pants, adjustable vest; white plain front shirt; windsor tie; 100% polyester

**Sizing for all Toddler Nested Suits:**

Size:	Fits:	Chest:	Waist:	Outseam:
01	12-18 mos.	19"	18-21"	18"
02	2T	21"	19-22"	19.5"
03	3T	23"	20-23"	21.5"

**\$99**

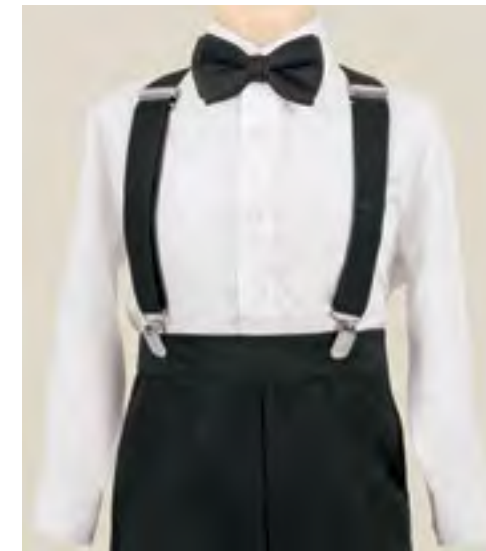
Toddler Nested Suits for Purchase

## TODDLER PANT SETS



**Tan Toddler Pant Set | NPTT**

includes elastic back pants, ivory shirt; solid bow tie; suspenders; 100% polyester



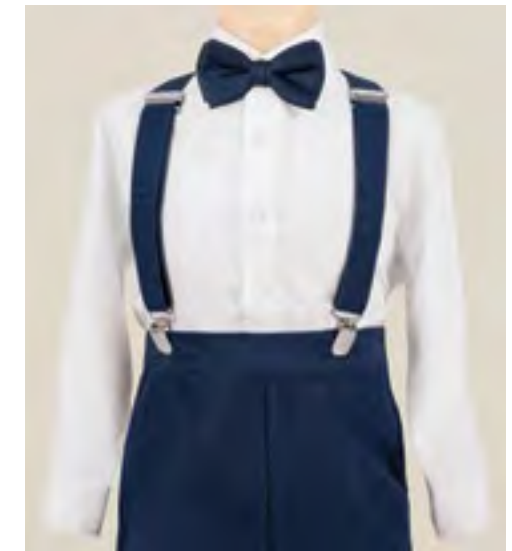
**Black Toddler Pant Set | NPTB**

includes elastic back pants, plain front white shirt; solid bow tie; suspenders; 100% polyester



**Grey Toddler Pant Set | NPTG**

includes elastic back pants, plain front white shirt; solid bow tie; suspenders; 100% polyester



**Navy Toddler Pant Set | NPTN**

includes elastic back pants, plain front white shirt; solid bow tie; suspenders; 100% polyester

**Sizing for all Toddler Pant Sets:**

Size:	Fits:	Chest:	Waist:	Outseam:
01	12-18 mos.	19"	18-21"	18"
02	2T	21"	19-22"	19.5"
03	3T	23"	20-23"	21.5"

**\$89**

Toddler Pant Sets for Purchase



**BLACK EURO SLIM STRETCH PANTS**



**Black Euro Slim Stretch Suit Pants | N11P**

Euro Slim Fit; flat front;  
exact waist; belt loops

**\$85**

Euro Style Suit Pants for Purchase

**Pant Sizing:**

Regular: 28-44  
Short: 28-44  
Long: 28-44  
Boys': 26-28  
(even sizes only)

**Also Shown:**

**Black/Brown Reversible Belt | NBLT**

see page 46

**Black Sparkle Shoes | NBSKS**

see page 44

**WHITE EURO SLIM STRETCH PANTS**



**White Euro Slim Stretch Suit Pants | N17P**

Euro Slim Fit; flat front;  
exact waist; belt loops

**\$85**

Euro Style Suit Pants for Purchase

**Pant Sizing:**

Regular: 28-44  
Short: 28-44  
Long: 28-44  
Boys': 26-28  
(even sizes only)

**Also Shown:**

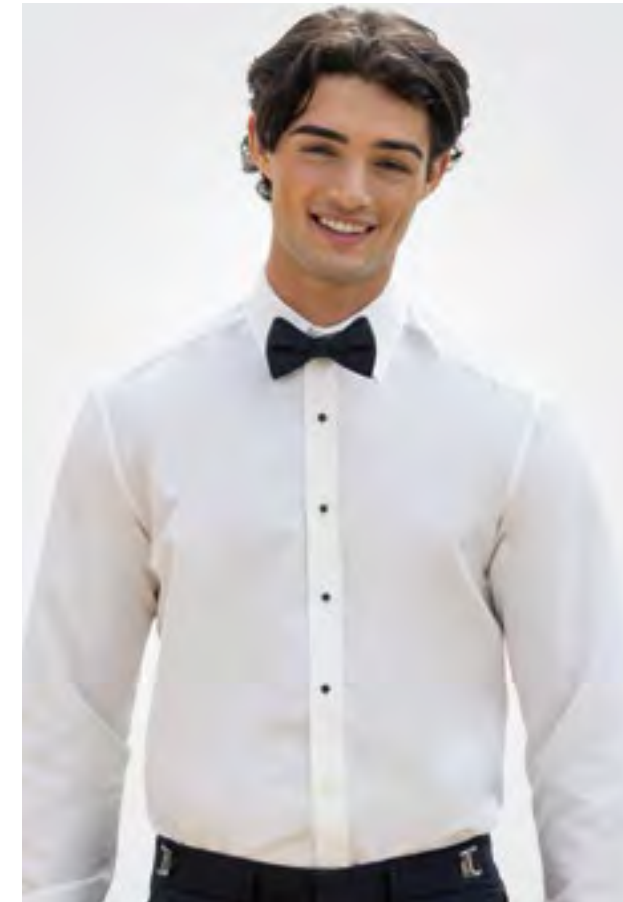
**Black/Brown Reversible Belt | NBLT**

see page 46

**White Synchro Casual Shoe | NCSW**

see page 44

**MICROFIBER SHIRTS**



**Microfiber Shirts**  
white-N76W; black-N76B; ivory-N76I  
plain front; laydown collar

**\$54**

Microfiber Shirts for Purchase

**Microfiber Shirt Sizing:**

BXS - 4XL

**FITTED MICROFIBER SHIRTS**



**Fitted Microfiber Shirts**  
white-N96W; black-N96B; ivory-N96I  
tapered fit; plain front; laydown collar

**\$54**

Fitted Microfiber Shirts for Purchase

**Fitted Microfiber Shirt Sizing:**

BL - 3XL

**CLASSIC SHIRT**



**1/4" Pleated Shirt | N85W**  
white; 65/35 blend; wing collar

**\$39**

Classic Shirt for Purchase

**N85W Shirt Sizing:**

BXS - 5XL



**BLACK FULLBACK VEST**



**Black Fullback Vest | NFBS**

satin; four button front; adjustable back

**\$79**

Black Fullback Vest for Purchase

Fabric Content: Polyester

**Also Shown:**

Satin Pre-Tied Windsor Tie | NFBLK - see page 47

**BROWN TWEED FULLBACK VEST**



**Brown Tweed Fullback Vest | NFTW**

Wool; four button front; adjustable back; men's sizes available; boys' sizes available in backless styling

**\$79**

Tweed Vest Purchase Price

Fabric Content: 100% Wool

Vest Sizing: see page 37

**Also Shown:**

Solid Windsor Tie | NWWIV - see page 39

Tan Suit Pants | N8TP - see page 24

**BLUE TWEED FULLBACK VEST**



**Blue Tweed Fullback Vest | NFTWB**

Wool; four button front; adjustable back; men's sizes available; boys' sizes available in backless styling

**\$79**

Tweed Vest Purchase Price

Fabric Content: 100% Wool

**Also Shown:**

Solid Windsor Tie | NWWSL - see page 39

Light Grey Suit Pants | N8GP - see page 22

**GREY TWEED FULLBACK VEST**



**Grey Tweed Fullback Vest | NFTWG**

Wool; four button front; adjustable back; men's sizes available; boys' sizes available in backless styling

**\$79**

Tweed Vest Purchase Price

Fabric Content: 100% Wool

**Also Shown:**

Solid Windsor Tie | NWWWI - see page 39

Black Stretch Pants | NSBP - see page 17

SIZING FOR MEN'S FULLBACK VEST										
Regular Sizes								Long Sizes - 6' 2" and over		
	Small	Medium	Large	X-Large	2X-Large	3X-Large	4X-Large	Medium	Large	X-Large
Coat Size Range	36-38	39-42	43-45	46-48	50-54	56-58	60-62	39-42	43-45	46-48
Vest Size Code	RS	RM	RL	RX	R2	R3	R4	LM	LL	LX

Coat Size Range	BOYS' BACKLESS VEST			MEN'S FULLBACK VEST												MEN'S BACKLESS VEST	
	Small	Medium	Large	Regular Sizes						Long Sizes - 6' 2" and over							Fit All
				X-Small	Small	Medium	Large	X-Large	2X-Large	3X-Large	Small	Medium	Large	X-Large	2X-Large		
	3 - 6	7 - 12	14 - 16	18B - 35	36 - 38	39 - 42	43 - 45	46 - 48	50 - 54	56 - 58	36-38	39 - 42	43 - 45	46 - 48	50 - 54	56 - 58	60 - 70
Vest Size Code	BS	BM	BL	RXS	RS	RM	RL	RX	R2	R3	LS	LM	LL	LX	L2	L3	5XA





# MICHAEL KORS

## SOLID BOW TIES

Pre-Tied Bow Ties

**\$34**  
Solid Bow Ties for Purchase

Available in men's sizes only.  
Boys' sizes not available for purchase.



Black | NBXBL



White | NBXWH



Ivory | NBXIV



Champagne | NBXCP



Blush | NBXBH



First Blush | NBXFB



Ballet | NBXBA



Rose Petal | NBXRP



Ferrari Red | NBXFR



Apple Red | NBXAR



Wine | NBXWI



Plum | NBXPL



Navy | NBXNA



Royal Blue | NBXRO



Slate Blue | NBXSL



# MICHAEL KORS

## SOLID WINDSOR TIES

Solid Self-Tie Windsor Ties

**\$39**  
Solid Windsor Ties for Purchase

Available in men's regular and long sizes only.  
Boys' sizes not available.  
Rental styles are pre-tied.



Black | NWWBL



Charcoal | NWWCA



Silver | NWWSI



Platinum | NWWPT



Ivory | NWWIV



Champagne | NWWCP



Nude | NWWNU



Blush | NWWBH



First Blush | NWWFB



Ballet | NWWBA



Rose Petal | NWWRP



Coral | NWWCO



Ferrari Red | NWWFR



Apple Red | NWWAR



Wine | NWWWI



Plum | NWWPL



Navy | NWWNA



Royal | NWWRO



Slate Blue | NWWSL



Teal | NWWTE





# MICHAEL KORS FLORAL BOW TIES

Pre-Tied Bow Ties

**\$34**  
Floral Bow Ties for Purchase

Available in men's sizes only.  
Boys' sizes not available for purchase.



Black | NBFBL



Ivory | NBFIV



Champagne | NBFCP



Rose Gold | NBFRS



Blush | NBFBH



Dusty Coral | NBFCO



Mauve | NBFMV



Apple Red | NBFAR



Wine | NBFWI



Sky Blue | NBFSK



Lite Blue | NBFLL



Dusty Blue | NBFDB



Royal Blue | NBFRO



Slate Blue | NBFSL



Navy | NBFNA



Dark Green | NBFDG



Emerald | NBFEM



Sage | NBFSE



# MICHAEL KORS FLORAL WINDSOR TIES

Floral Patterned Self-Tie Windsor Ties

**\$39**  
Floral Windsor Ties for Purchase

Available in men's regular and long sizes only.  
Boys' sizes not available.  
Rental styles are pre-tied.



Black | NWFBL



Platinum | NWFPT



White | NWFWH



Ivory | NWFIV



Champagne | NWFCP



Biscotti | NWFBT



Rose Gold | NWFRS



Bellini | NWFBE



Dark Coral | NWFDC



Dusty Coral | NWFCO



Blush | NWFBH



Mauve | NWFMV



Apple Red | NWFAR



Wine | NFWWI



Cranberry | NWFCE



Plum | NWFPL



Dusty Lavender | NWFDL



Lavender | NWFLL



Lite Blue | NWFLL



Dusty Blue | NWFDB



Slate Blue | NWFSL



Navy | NWFNA



Dark Green | NWFDG



Emerald | NWFEM



Sage | NWFSE





# MICHAEL KORS STRIPED WINDSOR TIES

Striped Self-Tie Windsor Ties

**\$39**  
Striped Windsor Ties for Purchase

Available in men's regular and long sizes only.  
Boys' sizes not available.  
Rental styles are pre-tied.



Black | NWXBL Charcoal | NWXCA Silver | NWXSI Platinum | NWXPT White | NWXWH Ivory | NWXIV Champagne | NWXCP



Gold | NWXGO Blush | NWXBH Ballet | NWXBA Pink Rose Gold | NWXPR Quartz | NWXQZ First Blush | NWXFB Rose Gold | NWXRS



Taupe | NWXTP Spice | NWXSC Cinnamon | NWXCI Rosewood | NWXRW Wine | NWXWI Apple Red | NWXAR Plum | NWXPL



Navy | NWXNA Slate Blue | NWXSL Dusty Blue | NWXDB Sage | NWXSE Evergreen/Moss | NWXEV Forest | NWXFO Hunter Green | NWXHG

## PATTERNED, SOLID & BASIC FORMAL SOCKS



Dark Grey Argyle | XPDG Navy Grey Argyle | XPNG Heather Navy Argyle | XPHN Navy Argyle | XPNA Wine Grey Argyle | XPWG



Light Pink Argyle | XPPK Grey Mustache | XPMGY Royal Mustache | XPMRO Royal | XSRO Wine | XSWI



Apple Red | XSAR Ferrari Red | XSFR Petal Pink | XSPK

**\$17**  
Premium Socks for Purchase



Black | XBLK Brown | XBRN White | XWHT

**\$8**  
Basic Socks for Purchase

Basic socks are available in both men's and boys' sizes.



## CASUAL SHOES



Cognac Sync  
Casual Shoe | NCSC



Black Sync  
Casual Shoe | NCSB



White Synchro  
Casual Shoe | NCSW

**\$115**

Stacy Adams Casual Shoes for Purchase

## FASHION SHOES



Black Sparkle  
Shoes | NBSKS



Silver Sparkle  
Shoes | NSSKS



Gold Sparkle  
Shoes | NGSKS



Black Subtle Sparkle  
Shoes | NBSKS



Charcoal Subtle Sparkle  
Shoes | NCSSS



Blue Subtle Sparkle  
Shoes | N3SSS



Black Velvet  
Loafers | NBLVS



Red Suede  
Loafers | NRSL

**\$79**

Fashion Shoes for Purchase

## FORMAL SHOES

To RENT see the JFW Accessory Catalog



Black Oxford  
Shoes | NBXS



Cognac Brown Oxford  
Shoes | NCXS



Chestnut Plain Toe  
Oxford Shoes | NCOP

**\$79**

Rent or Buy Formal Shoes for Purchase

## SUIT SHOES



Cognac Maddox  
Suit Shoes | NMCS



Black Maddox  
Suit Shoes | NMBS

**\$115**

Stacy Adams Suit Shoes for Purchase

## TUXEDO SHOES



Black Allegro  
Shoes | NBAS

**\$79**

Tuxedo Shoes for Purchase

MEN'S SHOE SIZING		
Styles	Medium Sizes	Wide Sizes
NCSC*	7 - 14	N/A
NCSB*	7 - 14	N/A
NCSW*	7 - 14	N/A
NBSKS*	7 - 14	N/A
NSSKS*	7 - 14	N/A
NGSKS*	7 - 14	N/A
NBSSS*	7 - 14	N/A
NCSSS*	7 - 14	N/A
N3SSS*	7 - 14	N/A
NBLVS*	7 - 14	N/A
NRSL*	7 - 14	N/A

\* Half sizes stop at 11.5 + Half sizes stop at 10.5

MEN'S SHOE SIZING		
Styles	Medium Sizes	Wide Sizes
NBXS*	6 - 18	7 - 18
NCXS*	6 - 18	7 - 18
NCOP*	6 - 18	7 - 18
NMCS*	7 - 14	N/A
NMBS*	7 - 14	N/A
NBAS*	6 - 18	7 - 18

\* Half sizes stop at 11.5 + Half sizes stop at 10.5



## WINDSOR TIES, BOW TIES & WESTERN BOLO TIE



(A)  
Men's Western Bolo Tie  
Black & Silver | NBOLA

**\$28**  
Men's Western Bolo Tie  
for Purchase

(B)  
Michael Kors  
Self-Tie Windsor Tie  
Black | NWWBL

**\$39**  
Michael Kors Self-Tie Windsor Tie  
for Purchase

(C)  
Satin Self-Tie Bow Tie  
Black | RBST

**\$29**  
Satin Self-Tie Bow Tie  
for Purchase

(D)  
Satin Pre-Tied Bow Tie  
Black | RBBT  
boxed

**\$19**  
Satin Pre-Tied Bow Tie  
for Purchase

(E)  
Faille Pre-Tied Bow Tie  
Black | NB990  
available in men's sizes only

**\$29**  
Faille Pre-Tied Bow Tie  
for Purchase

(F)  
Satin Pre-Tied  
Skinny Windsor Tie  
Black | NFSBL

**\$29**  
Satin Pre-Tied Skinny Windsor Tie  
for Purchase

(G)  
Satin Pre-Tied  
Windsor Tie  
Black | NFBLL

**\$29**  
Satin Pre-Tied Windsor Tie  
for Purchase

## CUMMERBUND & TIE SETS



(H)  
Satin Tie and  
Cummerbund Boxed Sets  
Black | BPPP  
Red | RPPP

**\$26**  
Satin Tie and Cummerbund  
Boxed Sets for Purchase

## REVERSIBLE BELTS



(I)  
Black/Brown  
Reversible Belt | NBLT

**\$24**  
Black/Brown Reversible  
Belt for Purchase

Sizing for  
Reversible Belts:

Waist:	Size:
21-24	XS
25-28	S
29-32	M
33-36	L
37-40	XL
41-44	2X
45-48	3X



## SUSPENDERS

Button-On Suspenders  
(J) Black | BOSB  
(K) White | BOSW

**\$20**  
Button-On Suspenders for Purchase

## FORMAL JEWELRY

Knot Cufflink & Stud Set  
(L) Gold | JBGB  
(M) Silver | JBSB

**\$45**  
Knot Cufflink & Stud Sets for Purchase



(L)

(M)



## FORMAL GLOVES

(N)  
Formal Gloves | GLOW  
white

**\$10**  
White Formal Gloves for Purchase

(N)



# NOVELTY SUSPENDERS



## MATCHES COAT STYLES



**Steel Grey | SS392**  
(Matches styles 392 & 391)



**Medium Grey | SS350**  
(Matches style 350)



**Heather Grey | SS262**  
(Matches styles 262 & 362)



**Tan | SS252**  
(Matches style 252)



**Sand | SS202**  
(Matches style 202)



**Tan | SS272**  
(Matches style 272)



**Indigo | SS221**  
(Matches style 221)



**Blue | SS302**  
(Matches style 302)

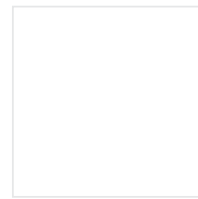


**Navy | SS372**  
(Matches style 372 & 371)

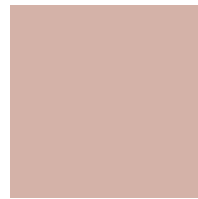
## MATCHES ACCESSORY COLORS



**Black | SSBL**



**White | SSWH**



**Blush (Bellini) | SSBH**



**Petal Pink | SSPK**



**Ferrari Red | SSFR**



**Apple Red | SSAR**



**Wine | SSWI**



**Lavender | SSLA**



**Lite Blue | SSLB**



**Royal Blue | SSRO**

**\$20**

Novelty Suspenders for Purchase





FOR PURCHASE